



Windows • Doors • Screens • Shade Systems
Designed, Engineered and Made in Germany

3773 30th Street Suite E • San Diego, California 92104
Phone: 619.665.9446 • Fax: 619.296.3407
www.fenstermann.com • info@fenstermann.com

Fenstermann LLC is your ultimate source for architectural products Made in Germany.

We are an independent distributor of "Made in Germany" windows, interior and exterior doors, screen systems, shutters and blinds in the USA.

We work with over 60 leading German manufacturers to select the finest products in each category, as well as the accompanying respective accessories.

Fenstermann products are no compromise products: no compromises in quality, no compromises in function and no compromises in selection. Our windows and doors are available in every fit and finish: PVC/vinyl, wood, aluminum, wood with cladding in aluminum, copper or bronze...you and your clients specify and we engineer, design and deliver.

Fenstermann LLC provides his customers with custom-made solutions and products which are all RAL quality labeled by the German government and pass the highest rating standards EN.

Visit us at www.fenstermann.com for a first impression. We will be happy to email you further information about our products as eBroschures.

Respectfully,

Ingo Scholz

Ingo Scholz, President

The magic 3 of Fenstermann windows and doors

1. Quality
2. Variety and choice
3. Operational features and security



All our windows are manufactured by highly skilled German craftsmen, who earn their skills in years long apprenticeships.

All windows are on an ongoing process of quality control by master carpenters and facility managers, supported by an advanced CNC computer system;

however, every man and woman involved in the production process takes pride in their work, and the outcome and quality of the product.

All suppliers of Fenstermann LLC products surpass the government standard of EN ISO 9001/9002 and carry the quality label "RAL".

Fenstermann LLC provides its customers with windows from vinyl, wood, aluminum, vinyl with aluminum clad and wood with aluminum clad. Special shapes as round, arched, eyebrow shape, triangle and even trapezoid are also available.

You can choose from different kind of woods – mahogany, walnut, cherry, alder, pine, oak and many more.



Give your windows and doors a special accent with colors – blend them in with the perfect match of the outside of your home or set them off; your choice of 1200 colors makes it easy to find the perfect one for you.



All products from Germany come finished from the production facility and do not require any additional adjustments or finish work such as staining, painting or searching for the right hardware. In this way, we can guarantee an unbroken chain of quality and design integration that saves you a lot of hassle, time and money.

The hardware mechanism of windows Made in Germany is unique. Rather than sliding up and down or sideways, these windows open fully, over the complete opening. In addition they also tilt in for controlled and secured ventilation. All windows feature a steel fitting with at least 3 security locking points which are placed around the frame. You can easily upgrade your windows with safety laminated glass. Special requirements allow us to provide you with bullet proof windows and high impact hurricane windows Miami Dade County standard – invisible, but effective security.



The magic 3 of Fenstermann Ultimate Screen Systems

1. Quality
2. Color choices
3. Operation features

Fenstermann "Ultimate Screens" are made from sturdy aluminum with a black fiberglass mesh. They fit perfectly to your windows and doors and because they are custom manufactured, there is no room for any mosquitoes and flies to sneak thru.

You have 1200 color choices for the screen frame to match either the color of your walls and interior/exterior design or the color of your windows and doors.



The screen door is a trackless system on the bottom; nothing that collects dirt, no toe catch and nothing you can step on and break and replace it.



This unique system is also designed for easy cleaning. Just take the complete screen unit out of its frame, clean it in your garage or on your patio and snap it back in. This is the fastest, easiest and most convenient way to clean a screen door.

The patented system operates mechanically without any springs that might rust and break. This allows the door to stay open in any position without the unwanted back snapping.



The "Ultimate Screen Door" allows you to connect several units to up to 30 feet each side and makes it the only available screen door for large pocket doors systems, accordion doors, folding doors and multi panel lift and sliding doors.



The 3 magic of Fenstermann Signature Interior Doors

1. Craftsmen ship
2. Design
3. Choices

Fenstermann interior doors are manufactured or hand crafted by highly skilled carpenters and their team. Every single door is custom made to width and height and guarantees a perfect fit and a maximum of opening to generate the perfect flow thru your home.



Our Signature Line is made from triple laminated solid wood with a wood veneer on both sides to accomplish the desired look and style. These doors will be steel reinforced when they reach a certain height and can be build up to 10 feet tall. These doors are ready for installation

and do not need any additional work – the complete hardware is included.



All doors have concealed hinges that give them a unique look and sophisticated design – contemporary or traditional, Mediterranean or Colonial style. The selected handles compliment any design and are available with privacy look and full locking system.



The patented and design awarded Signature Line is available with a jam system that is flush with your interior walls and creates the look of unity. The wood grain of the jam is crafted horizontally to continue the lines of the actual door panel – other finishes as brushed stainless steel, piano lacquer finishes and true wood veneer gives you plenty of choices. Combine wood with frameless glass panels and create your own unique piece of art door.



The Signature Door Design is also available as sliding door for tight spaces and large openings– it operates trackless on the floor with an award winning stainless steel sliding system on the top and slides either in front of the wall, behind the wall or as a pocket door inside your walls.



The signature was nominated for several design prizes and won Europe's most recognized and important RED DOT AWARD.

The 3 Magic of Fenstermann Perfect Shade Solution

1. Operation Features
2. Varieties of Fabrics
3. Special Shapes and Solutions



Fenstermann pleated window treatment is the unique solution for any window covering need. Its sleek design – narrow in width and height – doesn't cover much glass or frame from your windows and doors. With a thickness of only 1 inch, it fits into every application, blends in perfectly and is almost invisible when open.

This in Germany patented treatment system is available in bottom-up / top-down

operation and is free adjustable in every window or door. The system is "string less" with no visible strings hanging in the

glass and distracting your view to the outside.



You can choose from over 280 different fabrics, colors and designs to find your personal and perfect match for the interior of your home. Similar colors in different designs, or the same design in a variety of colors let you dress every room different without losing a consistent and sophisticated design style.

Find the perfect black out fabric for your entertainment room or bedroom; translucent for privacy and light for your dining room and living room; and transparent to dress your kitchen and office...



The perfect shade solution is also available for large openings as top down with an endless chain or motorized, triangle, trapezoid and arched/round. A custom solution lets you also dress your skylights and is therefore perfect for garden houses and sun rooms.



The 3 Magic of Fenstermann Roller Shutter Systems

1. Foam filled aluminum profiles
2. Adapts to any installation application
3. Special Shapes and multiple colors

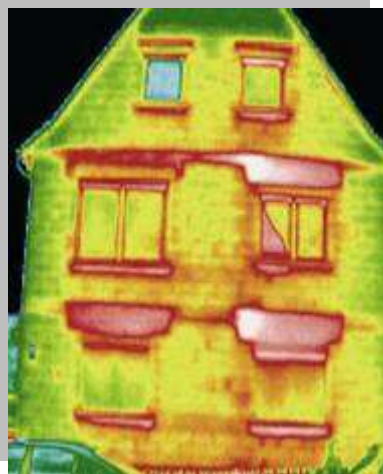
Fenstermann Exterior Roller Shutter Systems are perfect for anybody



who wants to improve the living comfort in his/her home. The aluminum profiles are filled with foam to improve the insulation value or strengthen the profile for burglar resistance. The profiles have small light slots between and if not fully closed, they allow light coming through during the day but still blocking the sun or the rain. Lowering all shutters in your house during your



absence will keep the temperature much lower than without and provides you with additional security. This helps you cutting down on energy costs, reduces your carbon footprint and improves the security for your family – day and night.



These German made shutter systems are made to order and can



be installed either on your windows or on your walls; all without interfering with the existing water barrier of the exterior walls.

Due to the shape of the profile and the quality manufacturing, a single shutter system can span a width up to 13 feet. The available operation options go from manual to motorized to solar powered and can be controlled with a single push of a button or integrated into an existing home security system.



100s of colors are available for both the casing and the shutter itself to blend in to your home or to set it off. All main parts are

from powder coated aluminum and can be customized to special shapes as trapezoid or triangular or around the corner – any style and size of window can be “shuttered”. Also available is an integrated disappearing insect screen or solar screen to suit any individual need.

